

Multi-Section Homes



Expect More from Titan Homes



About us

A home should say something about the people who live inside it. From contemporary to traditional, our homes will do just that. Trust in our ability to satisfy your specific lifestyle needs. Building homes with exceptional quality, value and satisfaction is a tradition we apply to every home we build.



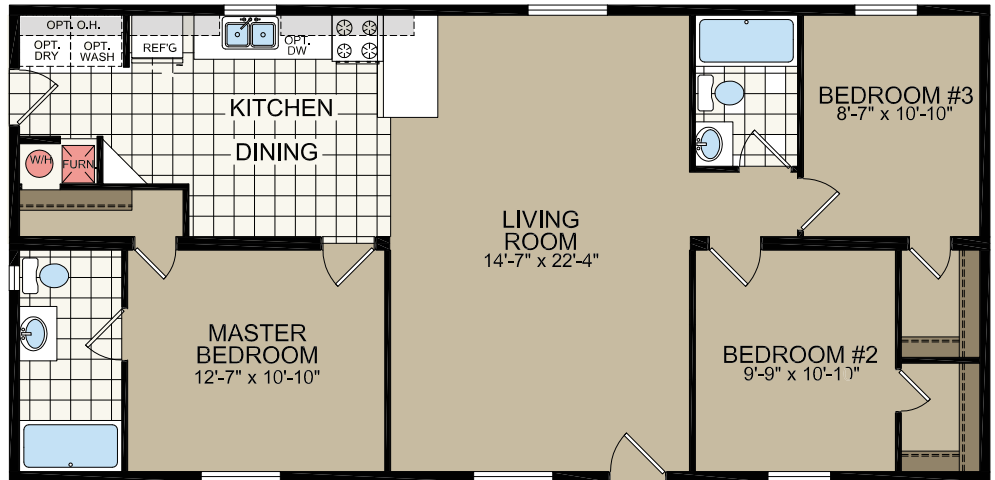
For over 45 years, Titan Homes has grown to become one of the most recognized and respected builders of factory-built and modular homes throughout the Northeastern United States. It's a recognition earned by consistently delivering more than our customers might expect. More innovative quality features. More home styles and personalized floor plans. More helpful customer service. More home for the money.

It's finding a home you can truly feel proud to call your own. It's design choices that perfectly match your need for space and comfort and frees you to express them in your own way. It's award-winning design and craftsmanship, with true attention to detail. It's a commitment to providing you with the style and features you'll enjoy for years to come. It's combining everything you would want in a home with surprising affordability.



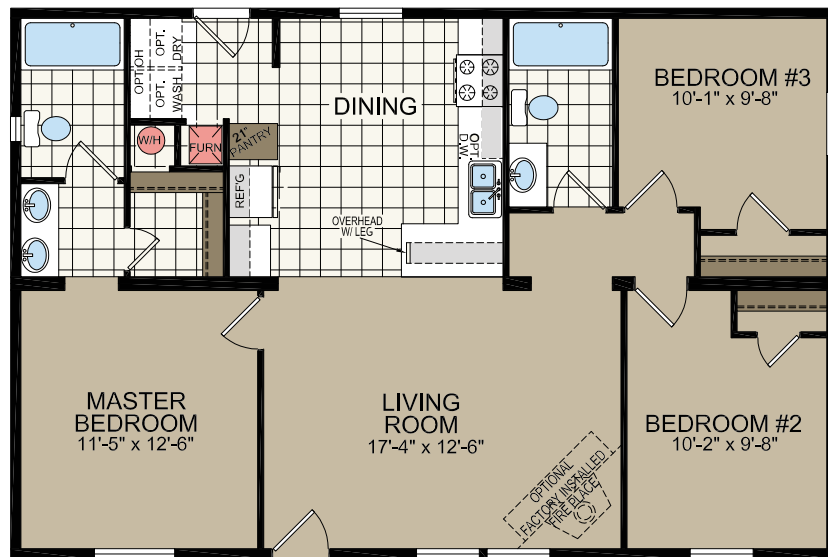
171

23'-4" x 48'
3 bed-2 bath
1120 sq. ft.



948

26'-8" x 40'
3 bed-2 bath
1066 sq. ft.



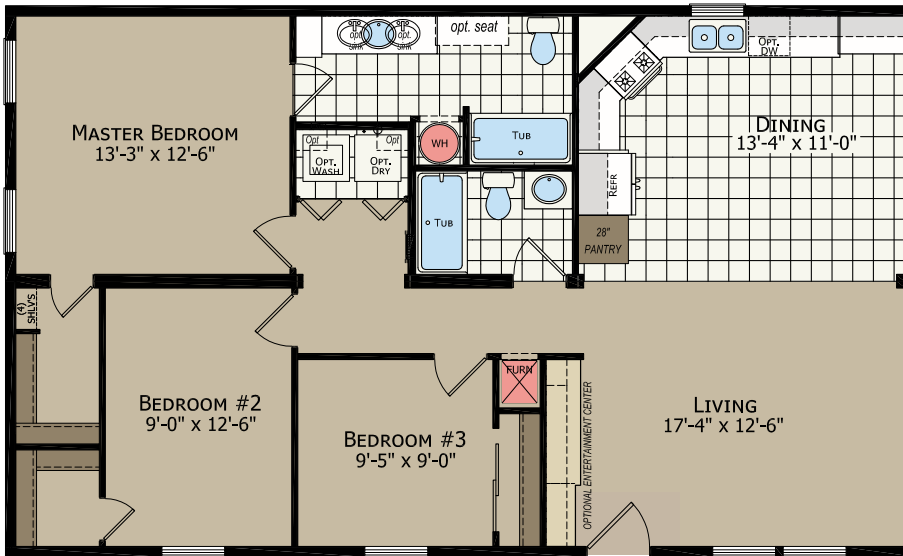
620

26'-8" x 44'
3 bed-2 bath
1173 sq. ft.



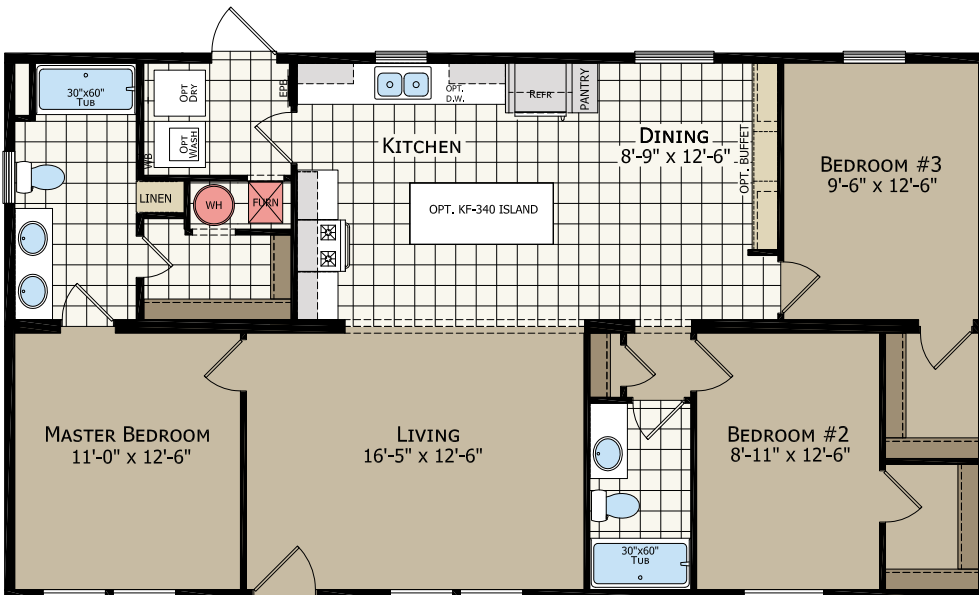
591

26'-8" x 44'
3 bed-2 bath
1173 sq. ft.



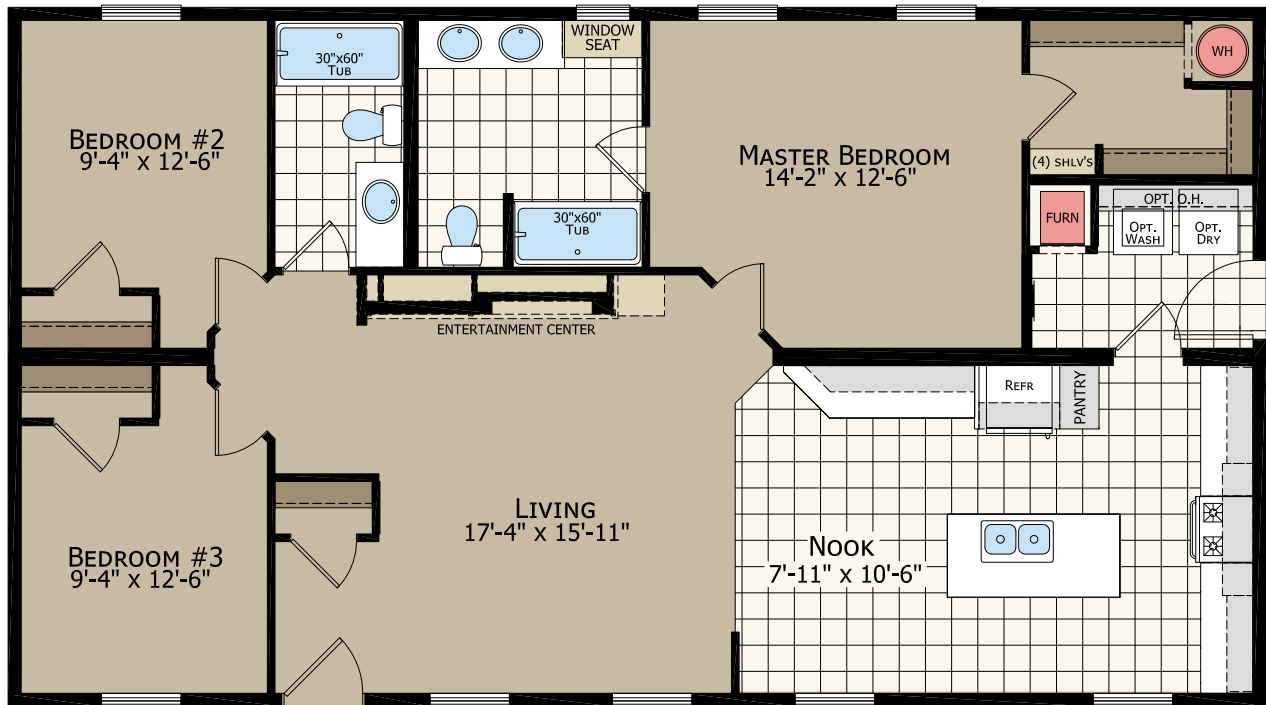
664

26'-8" x 48'
3 bed-2 bath
1280 sq. ft.



657

26'-8" x 48'
3 bed-2 bath
1280 sq. ft.

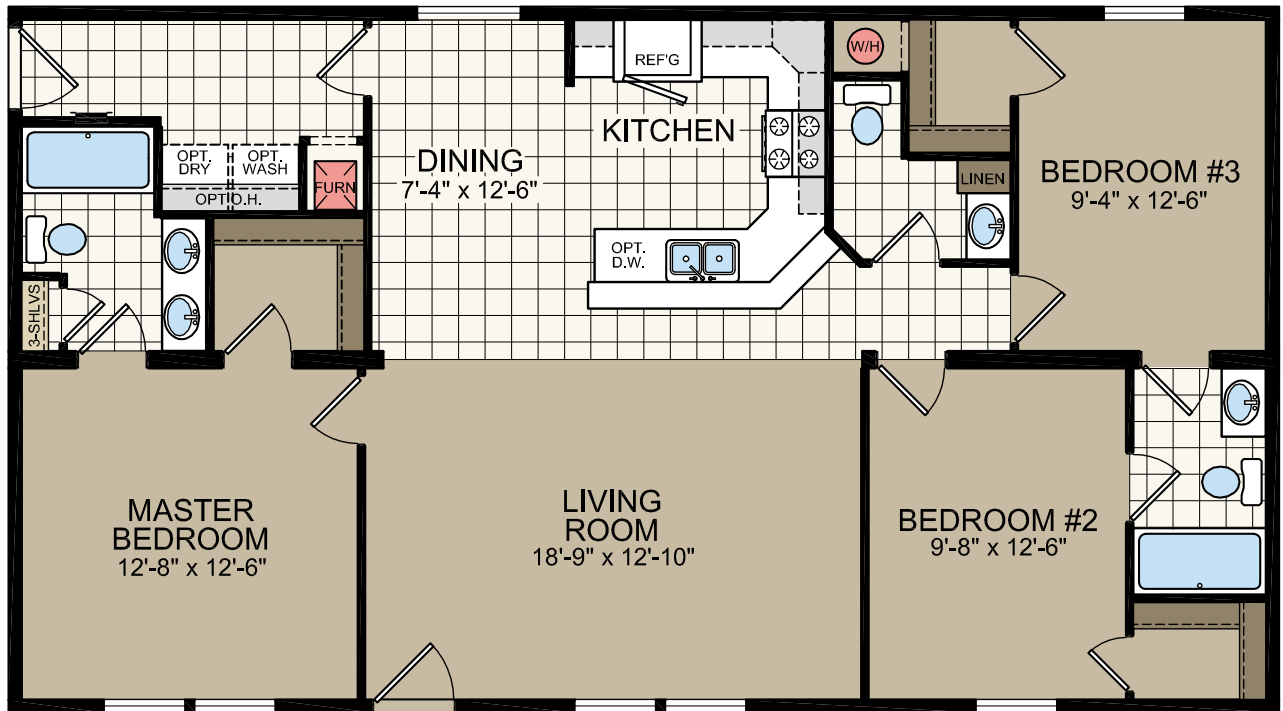


602

26'-8" x 48'
3 bed-2.5 bath
1280 sq. ft.



*shown with optional exterior elevation

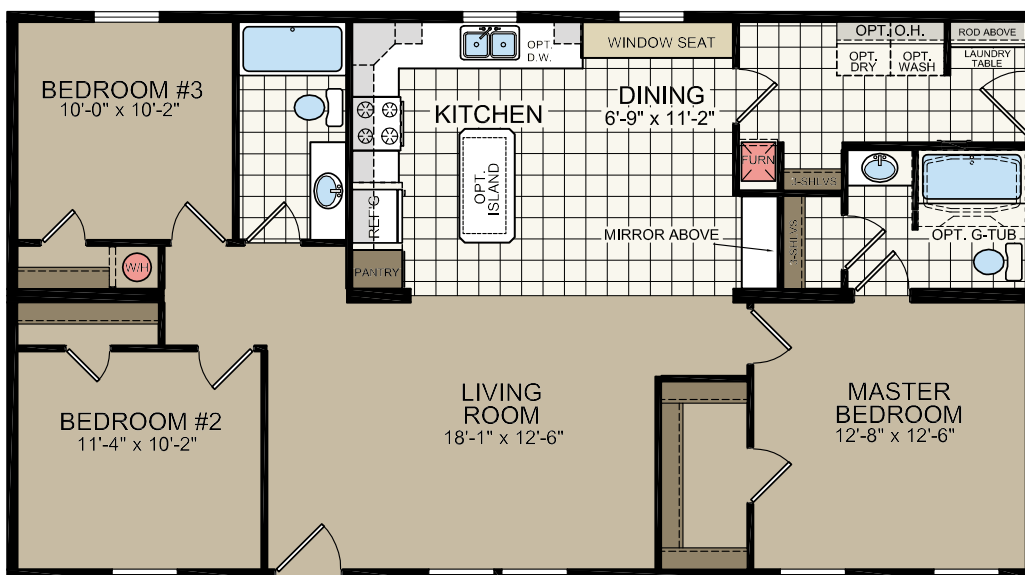


598

26'-8" x 48'
3 bed-2 bath
1280 sq. ft.



OPT. KITCHEN SINK
PICTURE WINDOW



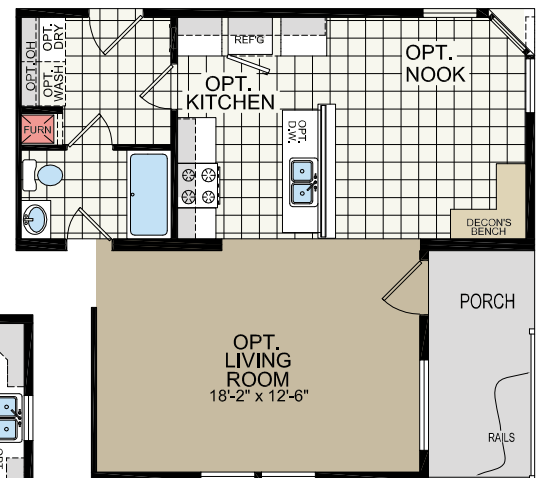
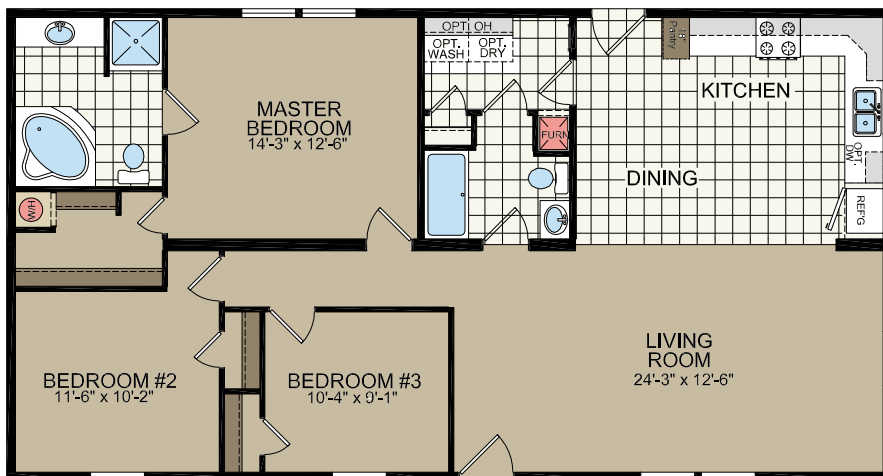
560

26'-8" x 50'
3 bed-2 bath
1333 sq. ft.



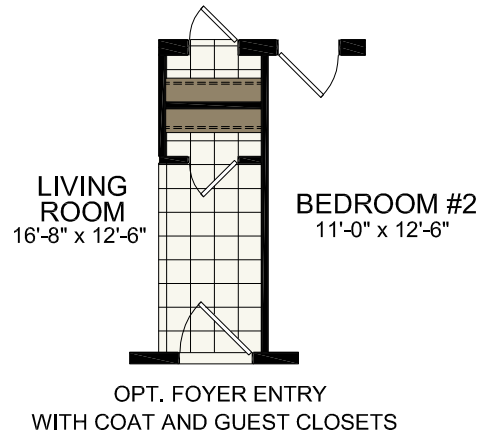
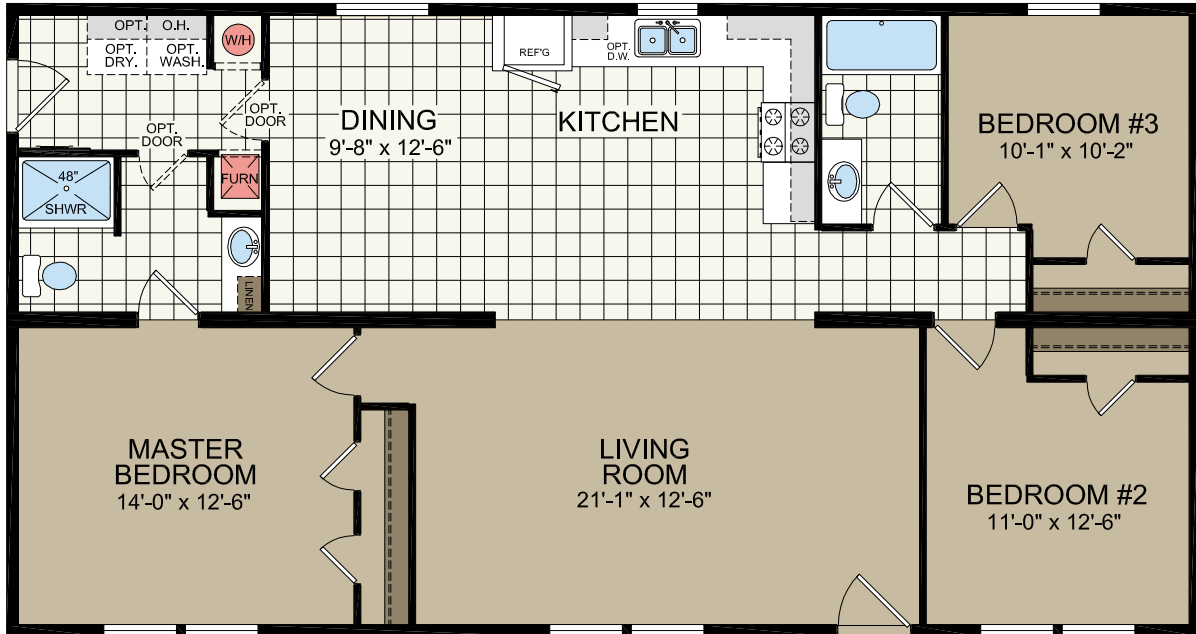
*shown with optional exterior elevation

OPT. PORCH/UTILITY/KITCHEN OPTION
THE MASTER BEDROOM DIMENSION BECOMES 11'-7"
IN WIDTH WITH THIS OPTION



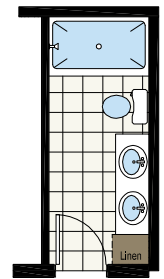
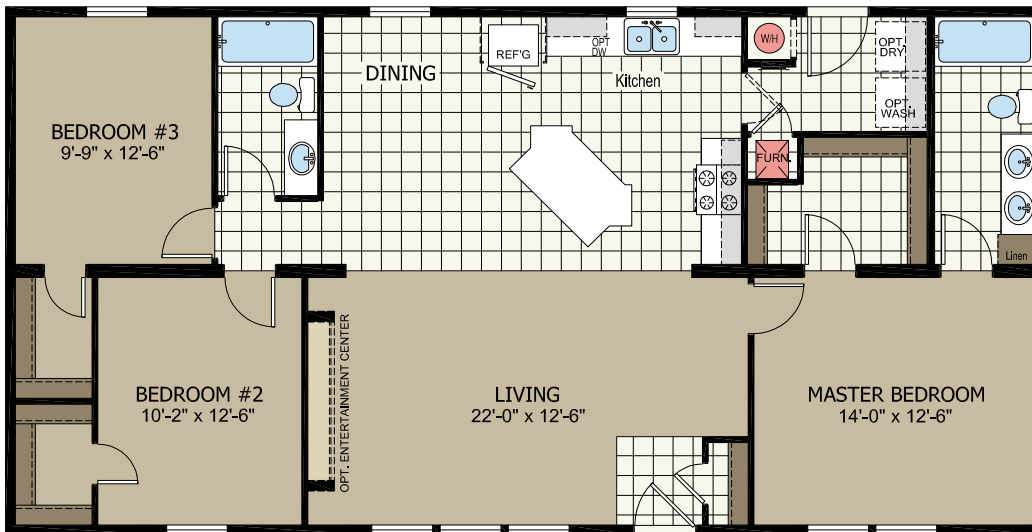
633

26'-8" x 50'
3 bed-2 bath
1333 sq. ft.



701

26'-8" x 52'
3 bed-2 bath
1387 sq. ft.



Opt. Master Bath

653

26'-8" x 52'
4 bed-2 bath
1387 sq. ft.



*shown with optional exterior elevation

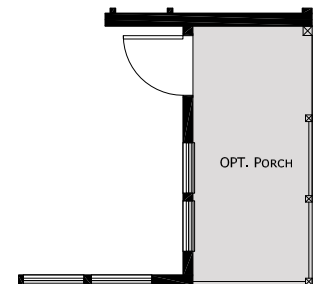
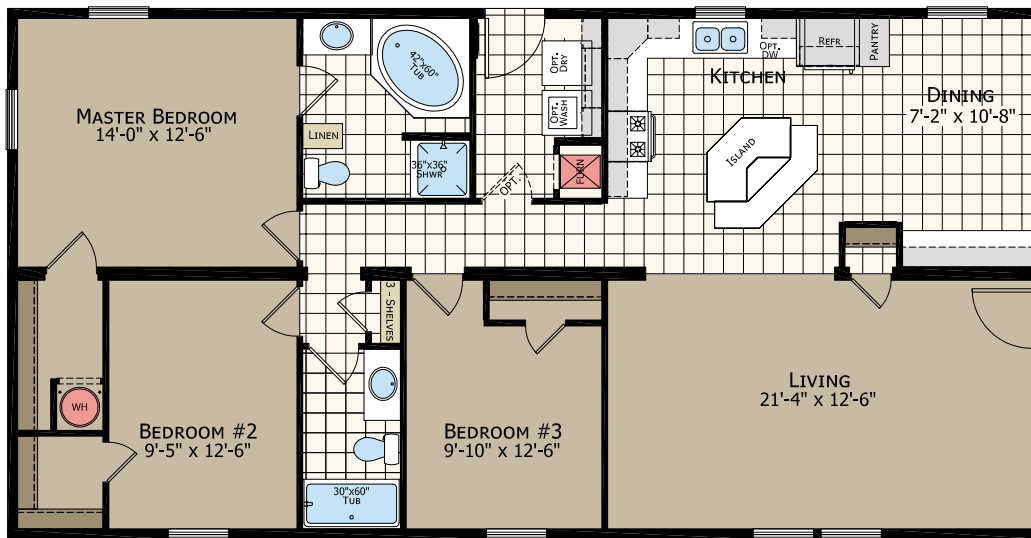
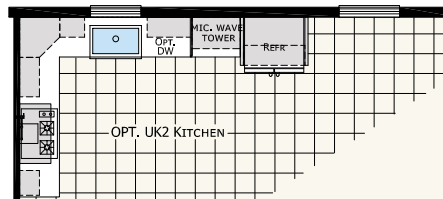


710

26'-8" x 52'
3 bed-2 bath
1387 sq. ft.

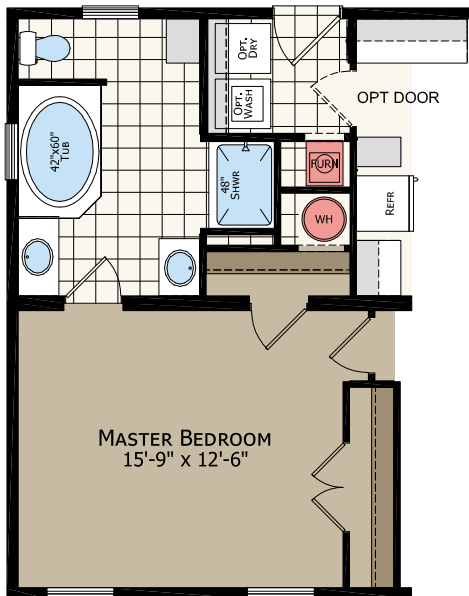
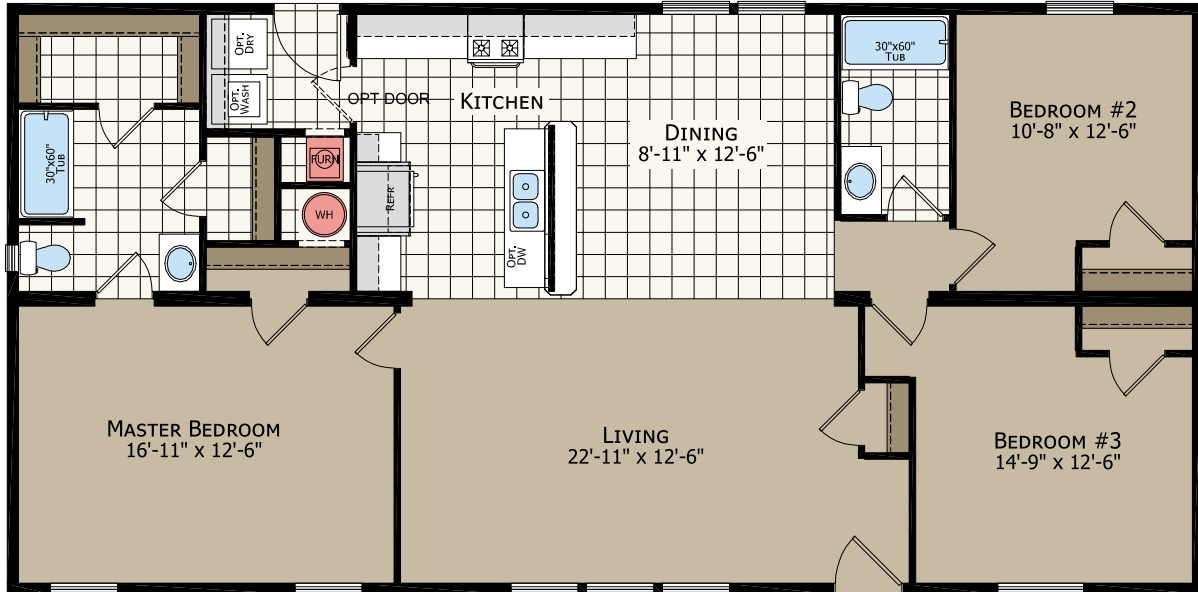


*shown with optional exterior elevation

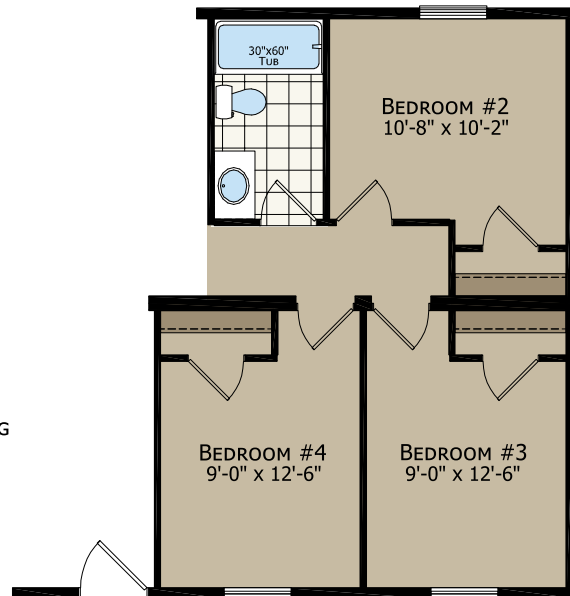


728

26'-8" x 54'
3 bed-2 bath
1440 sq. ft.



OPTIONAL MSTR. BATH



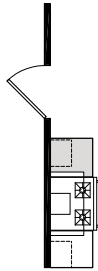
OPTIONAL 4TH BEDROOM

731

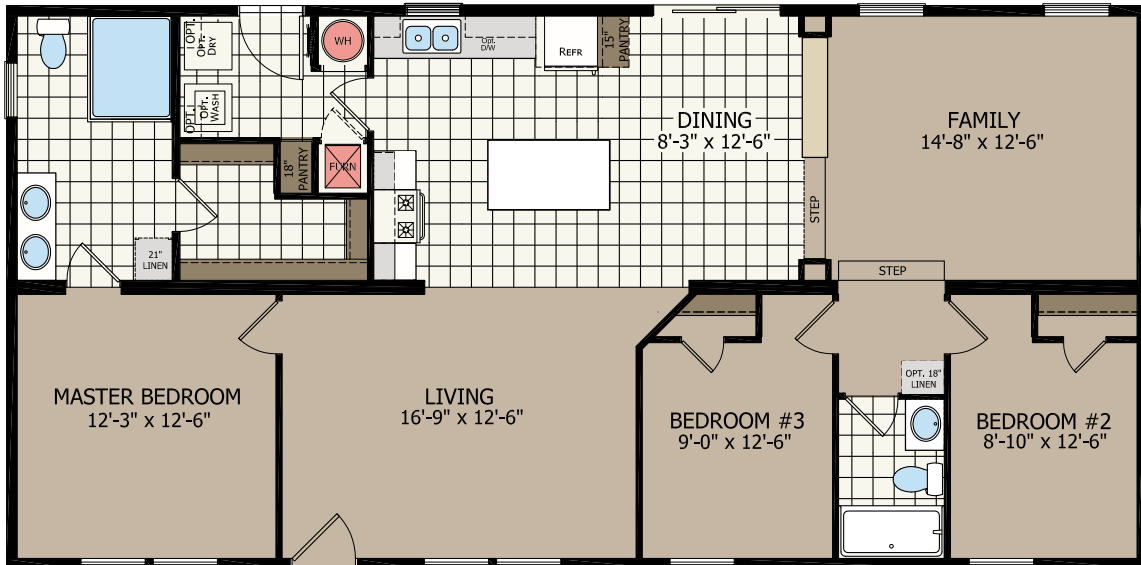
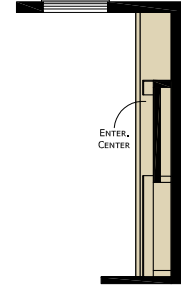
26'-8" x 54'
3 bed-2 bath
1440 sq. ft.



w/OPT.
RANGE HOOD

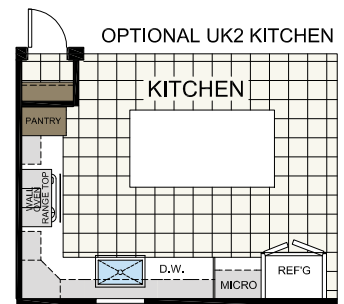
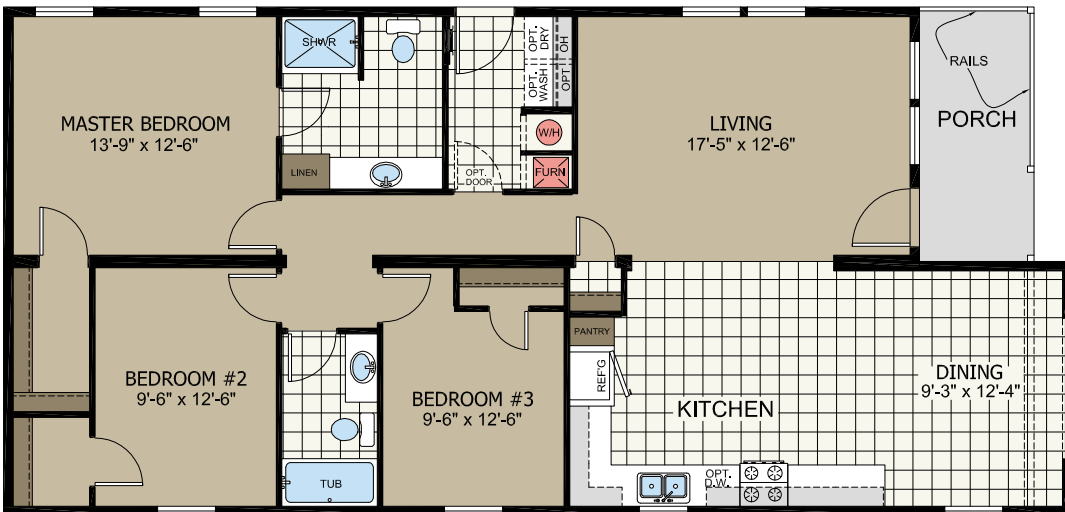


OPT.
ENTERTAINMENT
CENTER



760

26'-8" x 54'/56'
3 bed-2 bath
1472 sq. ft.

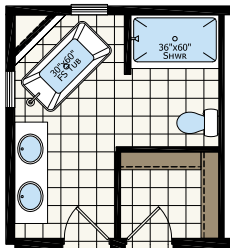
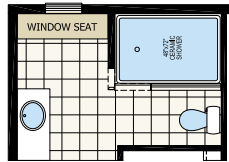


763

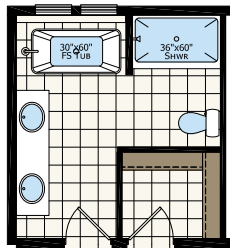
26'-8" x 56'
3 bed-2 bath
1494 sq. ft.



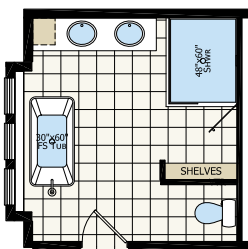
OPTIONAL MSTR. BATH #3



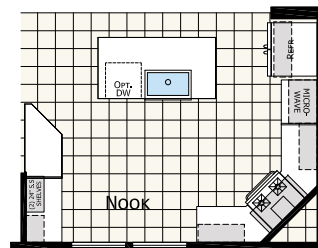
OPTIONAL MSTR. BATH #1



OPTIONAL MSTR. BATH #2



OPTIONAL RADIANT SPA



OPTIONAL UK3 KITCHEN

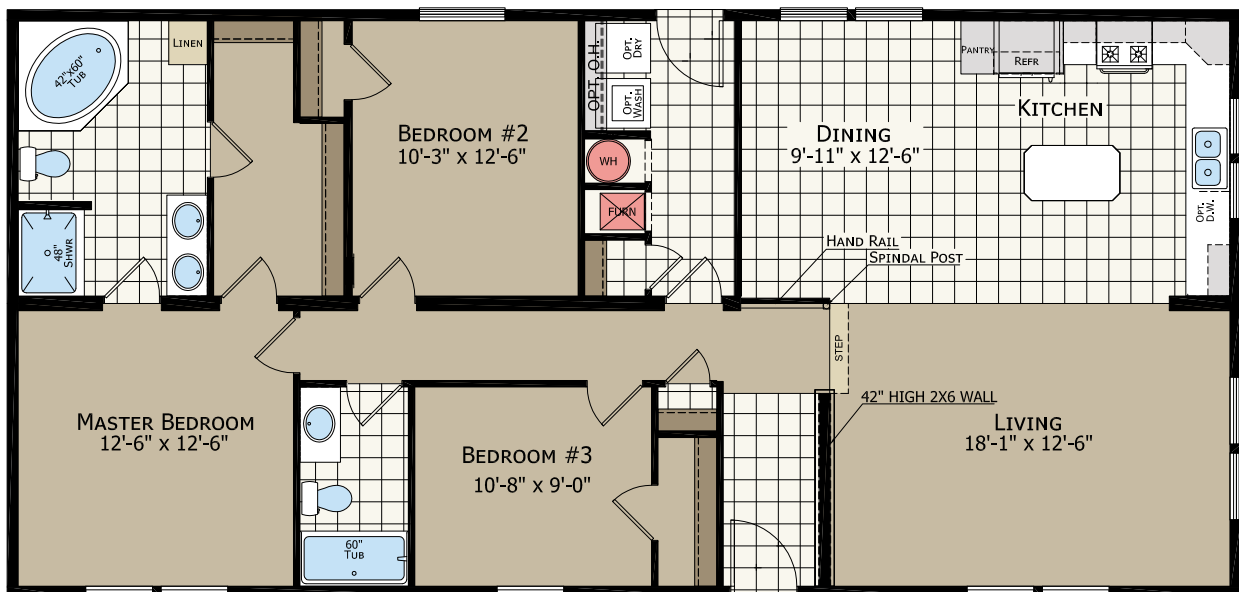
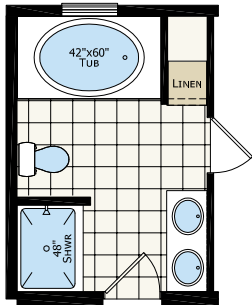
746

26'-8" x 56'
3 bed-2 bath
1494 sq. ft.



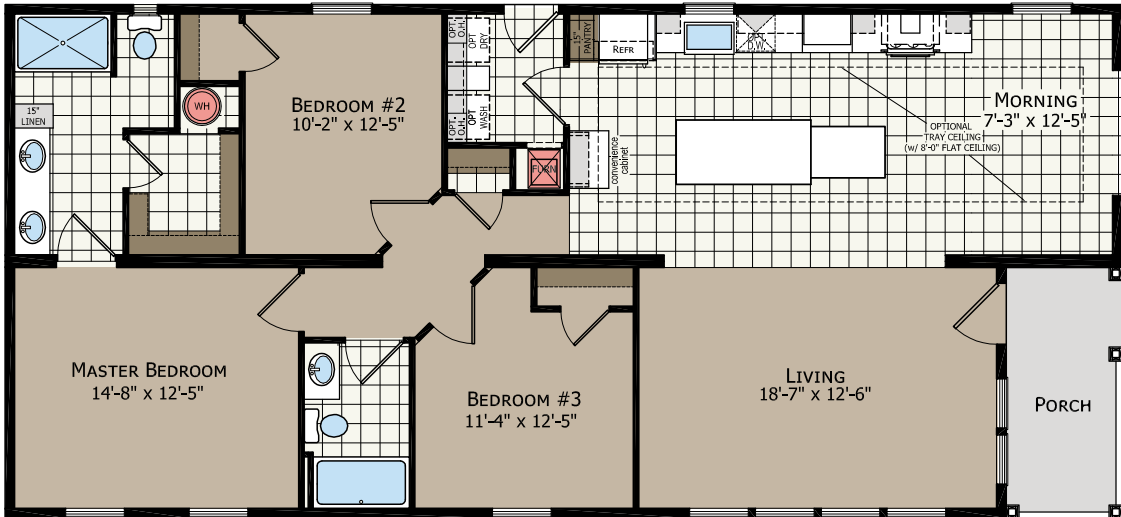
*shown with optional exterior elevation

OPTIONAL MSTR. BATH



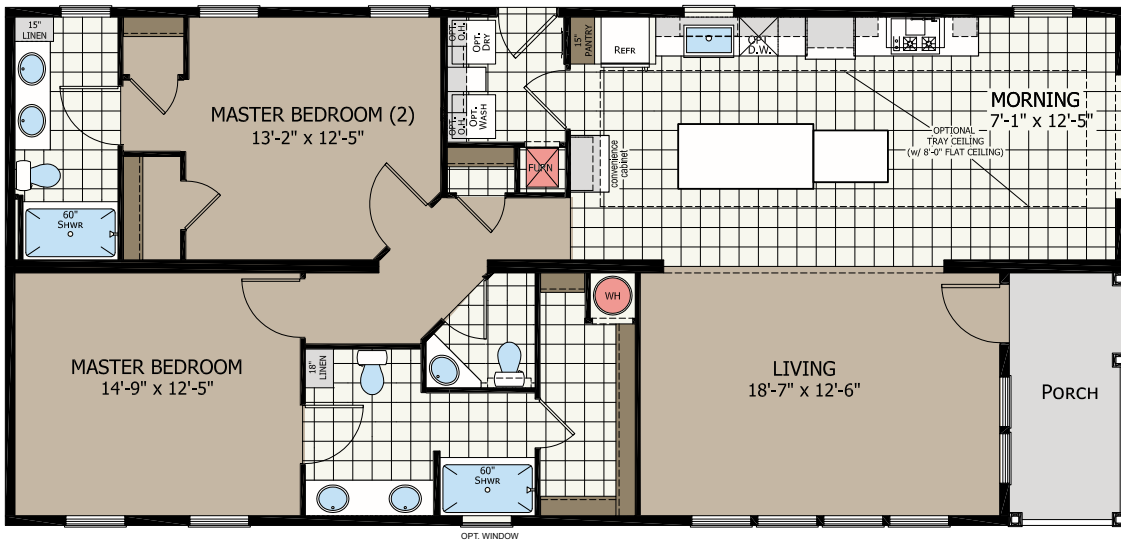
773

26'-8" x 58'
3 bed-2 bath
1547 sq. ft.



772

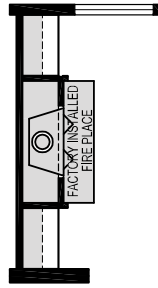
26'-8" x 58'
2 bed-2.5 bath
1547 sq. ft.



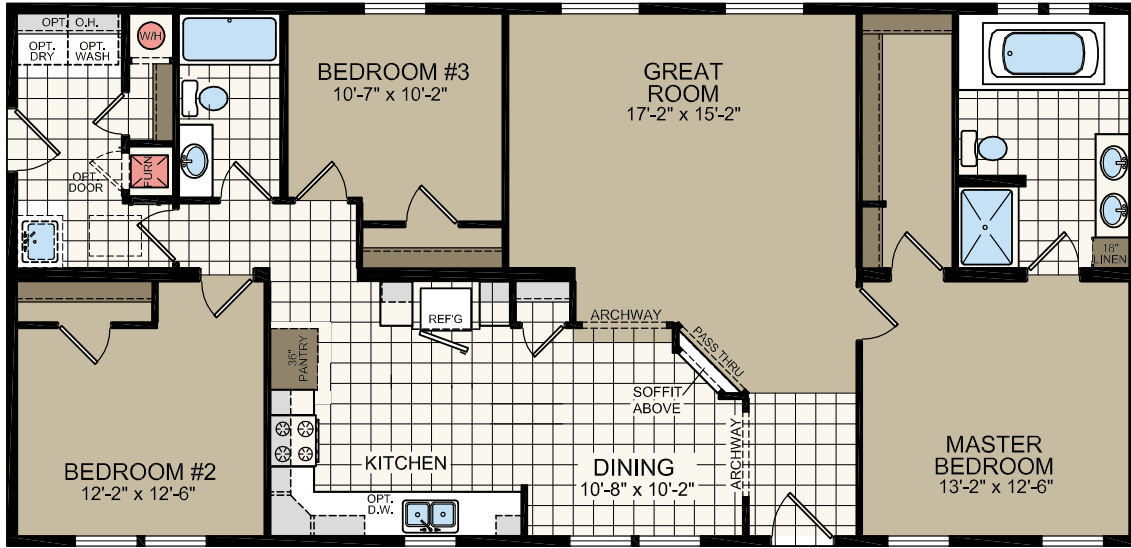
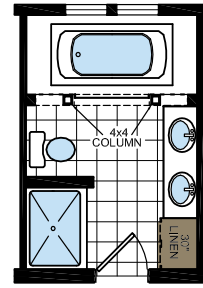
753

26'-8" x 56'
3 bed-2 bath
1494 sq. ft.

OPT. FIREPLACE



OPT. GREEK BATH

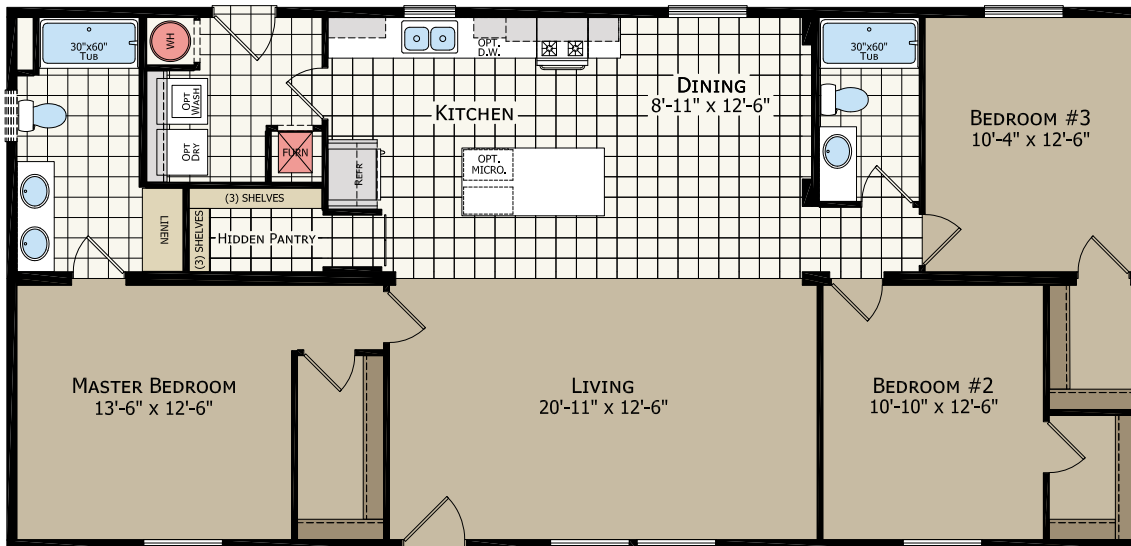


OPT. PICTURE WINDOW
OVER KITCHEN SINK

OPT. BUMP OUT WINDOWS

775

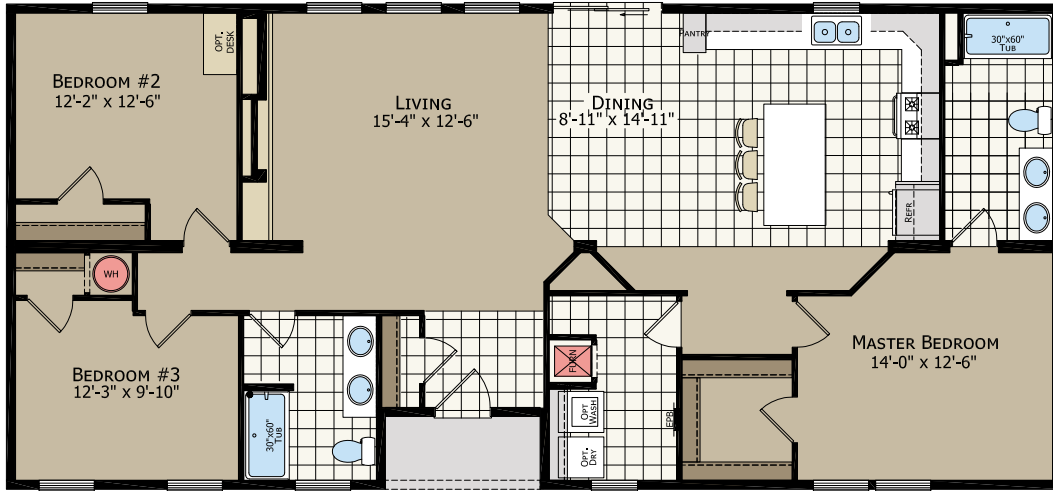
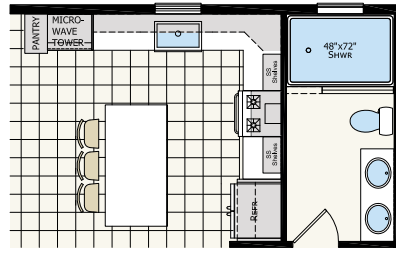
26'-8" x 56'
3 bed-2 bath
1494 sq. ft.



721

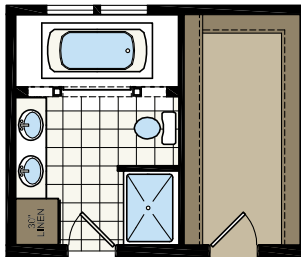
26'-8" x 58'
3 bed-2 bath
1546 sq. ft.

OPT. UK3 KITCHEN OPT. MSTR BATH

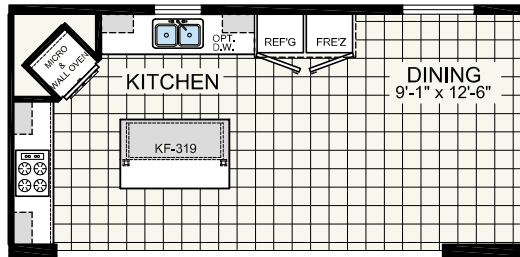


757

26'-8" x 60'
3 bed-2 bath
1600 sq. ft.

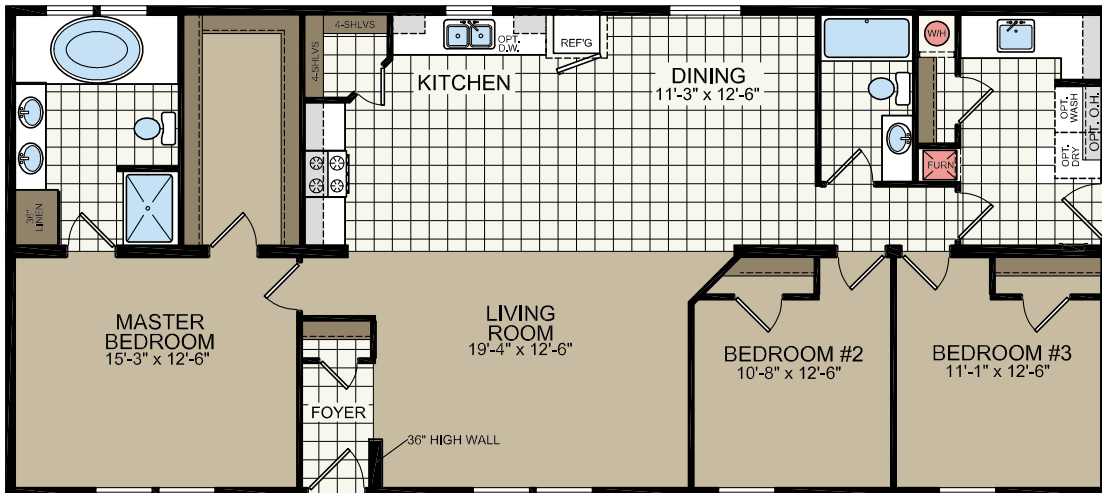


OPT. MSTR. BATH



OPT. ULTIMATE KITCHEN

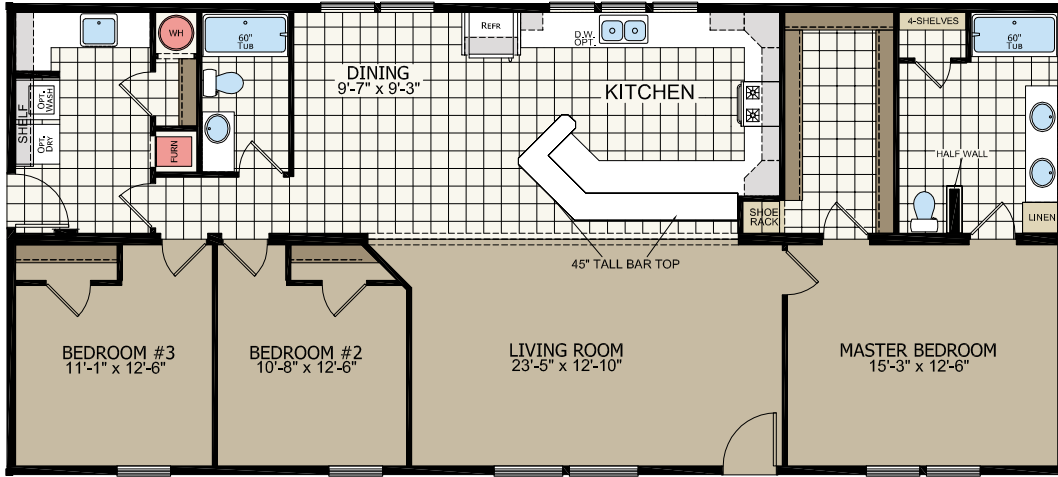
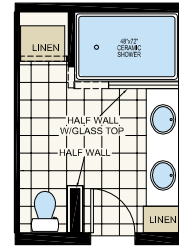
OPT. WINDOWS



762

26'-8" x 60'
3 bed-2 bath
1600 sq. ft.

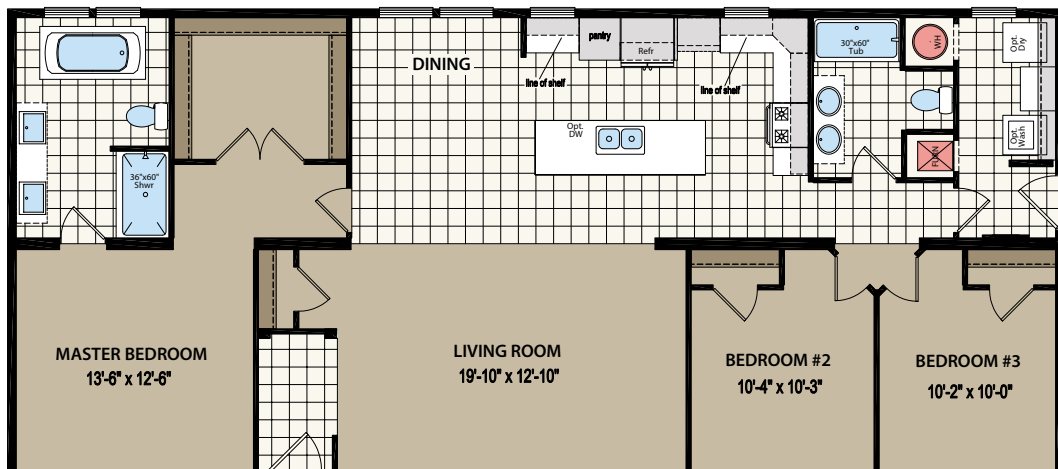
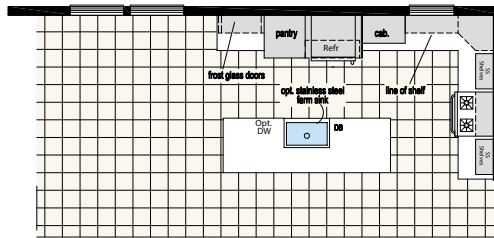
OPT. MASTER BATHROOM



796

26'-8" x 60'
3 bed-2 bath
1600 sq. ft.

opt. ultimate kitchen 3

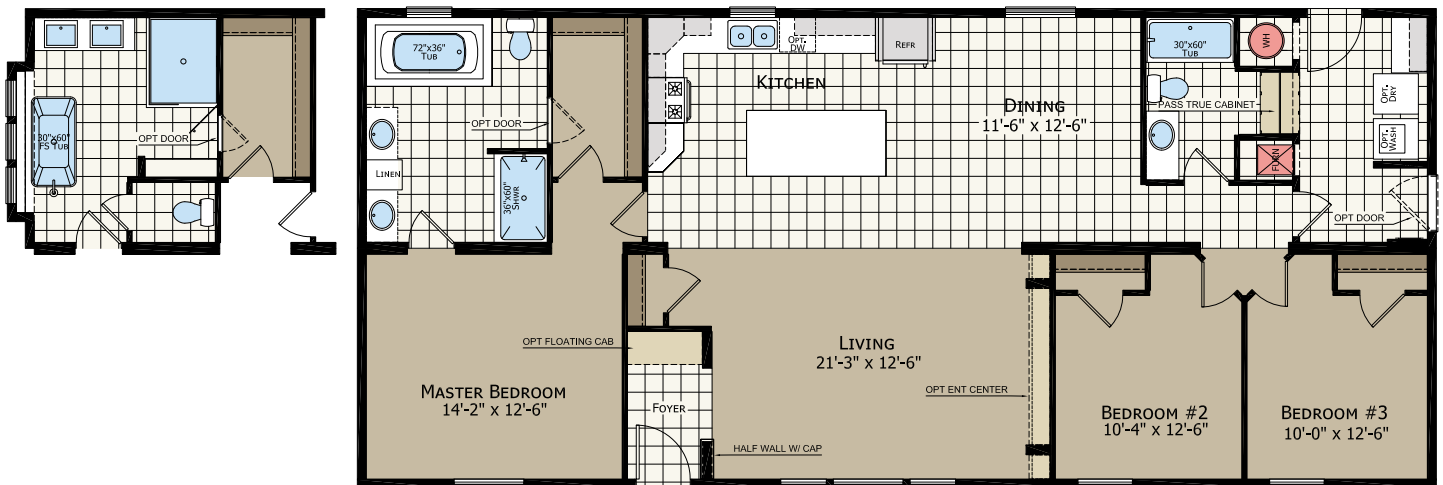


702

26'-8" x 60'
3 bed-2 bath
1600 sq. ft.



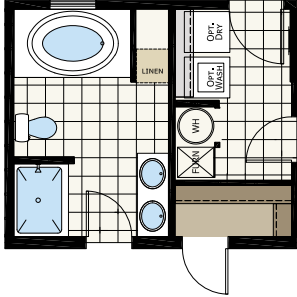
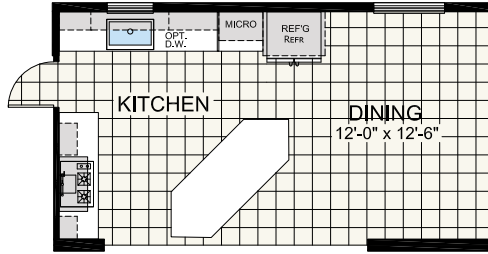
OPT RADIANT SPA



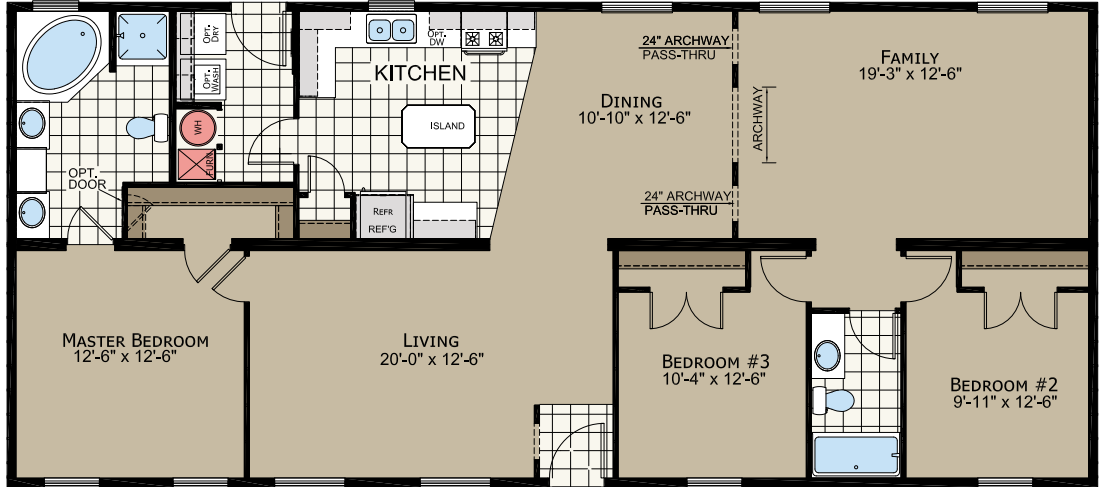
437

26'-8" x 60'
3 bed-2 bath
1600 sq. ft.

OPT. ULTIMATE KITCHEN 2



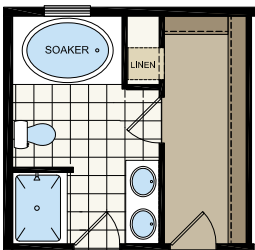
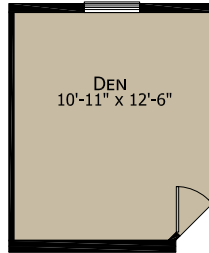
OPT. MASTER BATHROOM



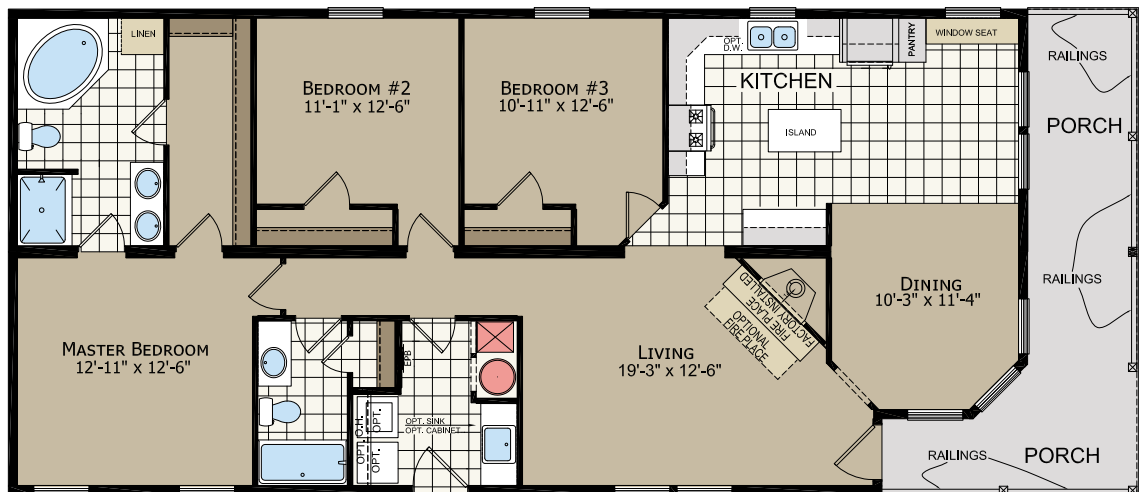
750

26'-8" x 62'
3 bed-2 bath
1654 sq. ft.

IN PLACE OF BEDROOM #3



OPTIONAL MASTER BATH



798

26'-8" x 62'
3 bed-2 bath
1654 sq. ft.



ELEVATION B



ELEVATION A



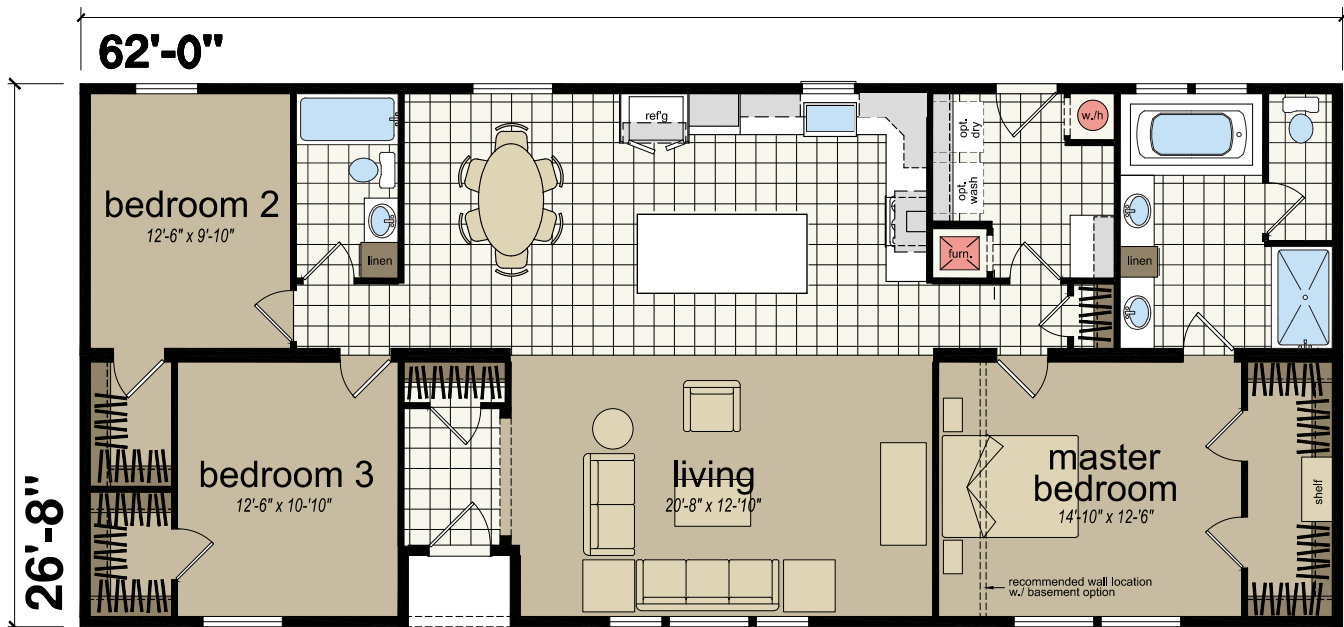
ELEVATION C



ELEVATION D

FAMILY *of* PLANS

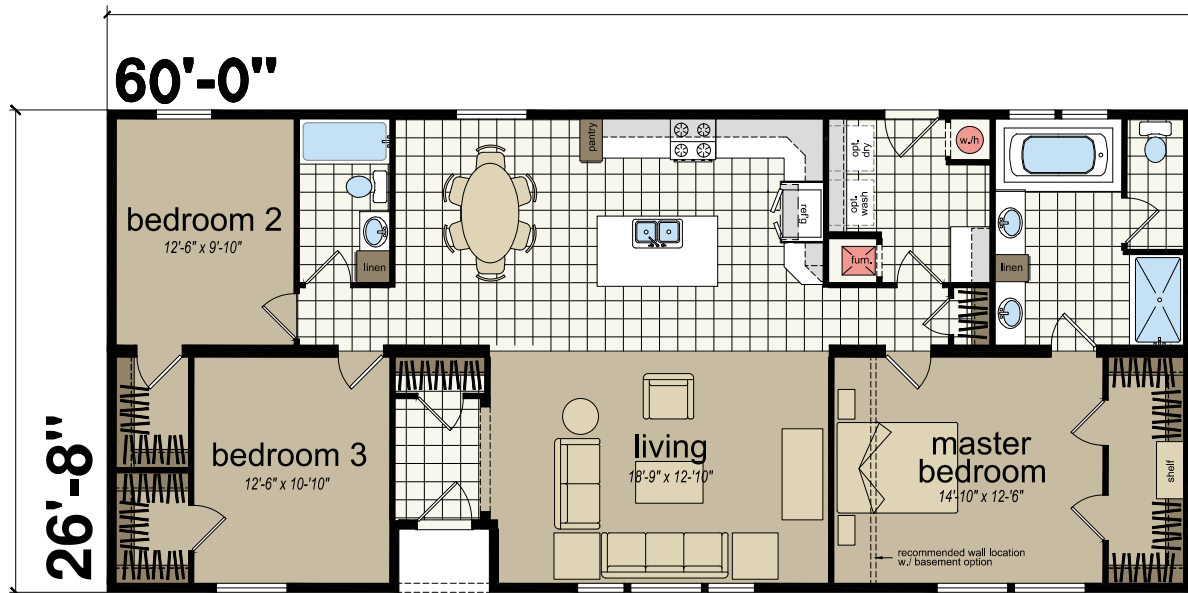
62'



*shown with optional ultimate kitchen two

FAMILY *of* PLANS

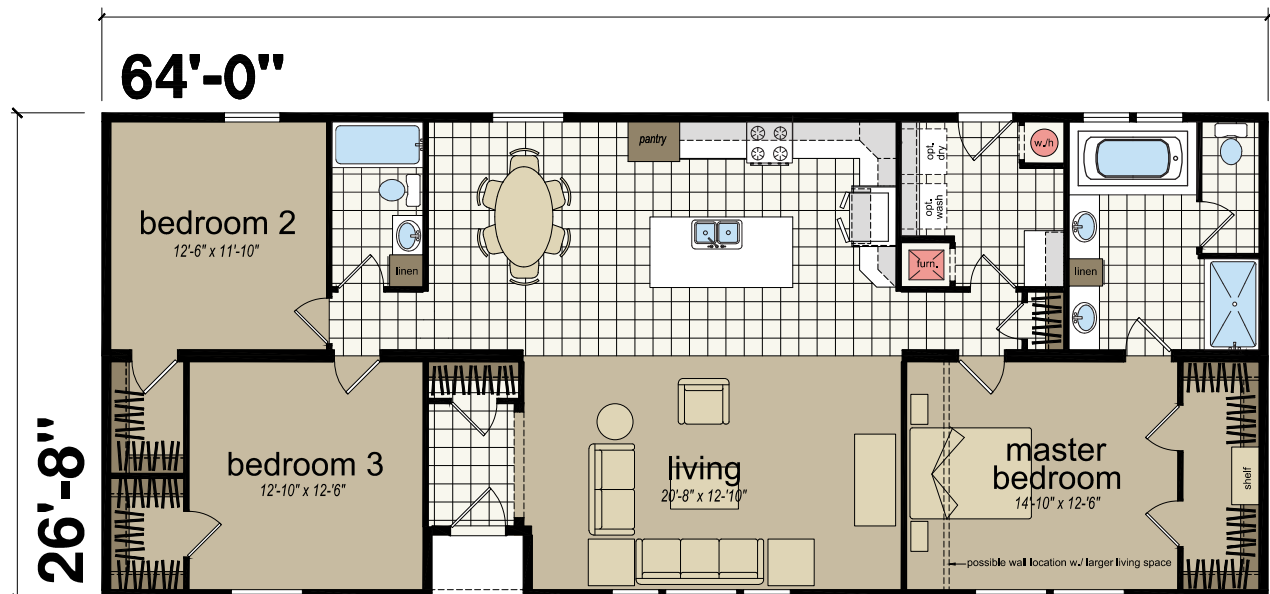
60'



FAMILY *of* PLANS

64'

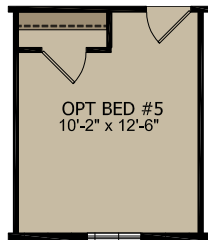
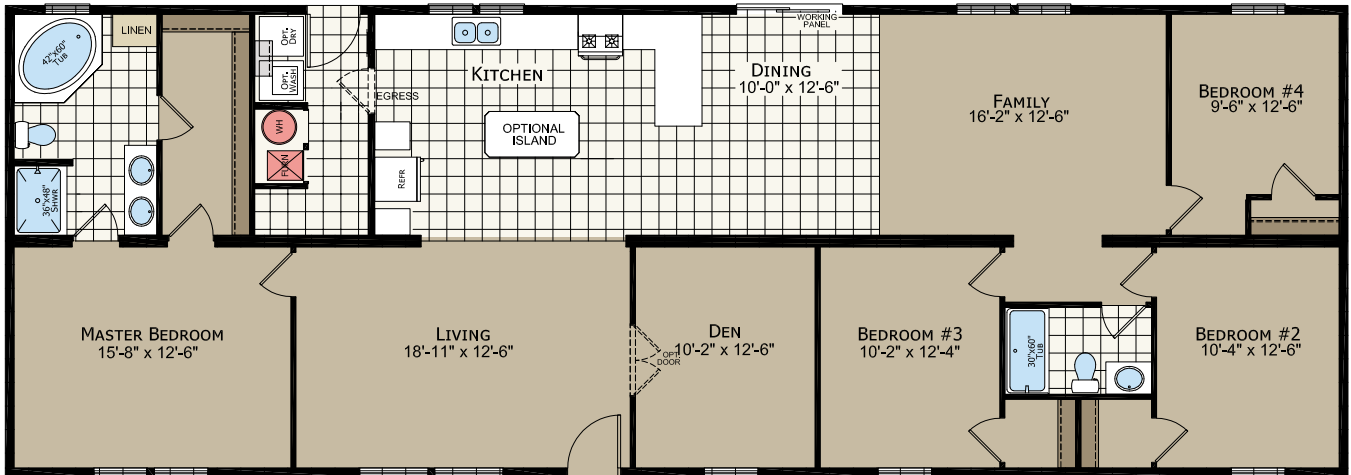
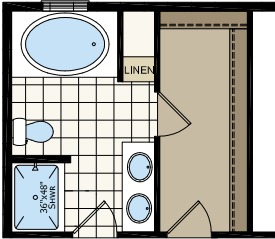
4 BED OPTION AVAILABLE



970

26'-8" x 76'
4 bed-2 bath
2027 sq. ft.

OPT. MSTR BATH



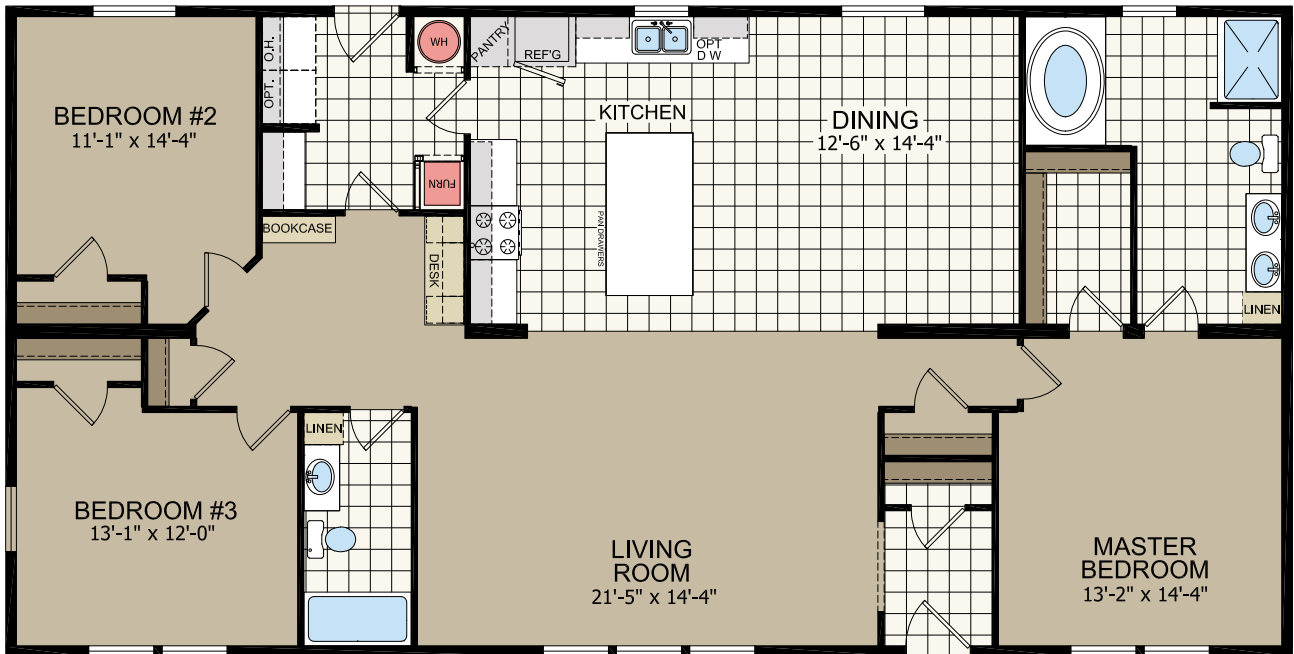
IN PLACE OF DEN

720

30'-4" x 60'
3 bed-2 bath
1820 sq. ft.



*shown with optional exterior elevation



Specifications & Standards

Feature	Pinnacle	Brentwood	Adirondack - Modular
CONSTRUCTION			
4" RECESSED FRAME	STD	STD	N/A
DETACHABLE HITCH	STD	STD	N/A
DOUBLE 4 VINYL SIDING	STD	STD	STD
FOAM CORE®	STD	7/16" OSB	7/16" OSB
7' 6" SIDEWALL CATHEDRAL CEILING	STD	STD	8'
30# ROOF LOAD - 24" OC	STD	STD	60# 5/12
15" VINYL SHUTTERS FDS	STD	STD	STD
10" EAVES GABLE ENDS AND SIDEWALLS	STD	STD	STD
IN FLOOR HEAT DUCT CROSSOVERS	STD	STD	N/A
FLOOR REGISTERS	IN-LINE	PERIMETER HEAT	HOT WATER BASE BOARD STUBBED
LOW E THERMAL WINDOWS	STD	STD	STD - ARGON FILLED
ROOF INSULATION	R-22	R-30	R-38
FLOOR INSULATION	R-14	R-22	N/A
EXTERIOR WALL INSULATION	R-19	R-19	R-19
2X6 EXTERIOR WALLS	STD	STD	STD
2X6 FLOOR JOISTS 16" OC	STD	STD	2X10
2X4 DOUBLE MARRIAGE LINE	STD	STD	STD
VAULTED CEILINGS THRU-OUT	STD	STD	8' FLAT
1/2" CEILING DRYWALL	STD	STD	STD
STIPPLE CEILING TEXTURE APPLICATION	STD	STD	SMOOTH FINISH
1/2" VOG WALL BOARDS	STD	KITCHEN, UTILITY, BATHROOMS, CLOSETS	N/A
1/2" PRIMED DRYWALL	OPTION	LIVING ROOM, DINING ROOM, FAMILY ROOM, HALL, BEDROOMS	100% THRU-OUT
36/80 FIBERGLASS FRONT DOOR	STD	STD	36/80 3/4"-LITE
36/80 COTTAGE REAR DOOR	STD	36/80 9-LITE FIBERGLASS	36/80 9-LITE
LIGHT AT ALL EXTERIOR DOORS	STD	STD	STD
7/16" OSB MARRIAGE LINE	N/A	N/A	STD
ARCHITECTURAL SHINGLES	OPTION	OPTION	STD
ROLLED RIDGE VENT	STD	STD	STD
ROOF DECKING	7/16" OSB	7/16" OSB	1/2" OSB
ICE GUARD AT EAVES	OPTION	OPTION	STD
HOUSE WRAP	OPTION	OPTION	STD

DISCLAIMER:

Due to continuous product development and improvement, prices, specifications, and materials are subject to change without notice or obligation. Square footage and other dimensions are approximate. Included images are artist renderings and are not intended to be an accurate representation of the home. Renderings and floorplans may be shown with optional features or third-party additions.

Specifications & Standards

Feature	Pinnacle	Brentwood	Adirondack - Modular
ELECTRICAL, HEATING AND PLUMBING			
PEX WATER LINES	STD	STD	STD
STUB WATER & SEWER LINES	N/A	N/A	STD
MILLER® AG FURNACE W/A COIL CABINET	STD	STD	HOT WATER BASE BOARD STUBBED
LOUVERED FURNACE DOOR	OPTION	STD	N/A
DUAL CONTROL THERMOSTAT	STD	STD	PROGRAMMABLE
30 GALLON ELECTRIC WATER HEATER	STD	N/A	N/A
40 GALLON ELECTRIC WATER HEATER	OPTION	STD	N/A
VENTILAIRE™ AIR EXCHANGE SYSTEM	STD	STD	N/A
WATER HEATER DRIP PAN	STD	STD	N/A
PLUMB FOR WASHER	STD	STD	STD
WIRE FOR DRYER	STD	STD	STD
EXTERIOR GFI PROTECTED OUTLETS	STD	STD	STD X 2
CO DETECTORS PER CODE	OPTION	OPTION	STD
GFCI PROTECTED OUTLETS PER CODE	STD	STD	STD
SWITCH-TO-LIGHT ALL WALK-IN CLOSETS	STD	STD	STD
LED SURFACE MOUNT LIGHTS	STD	STD	STD
SMOKE DETECTORS PER CODE	STD	STD	STD
100 AMP ELECTRICAL SERVICE	STD	STD	200 AMP
ALL COPPER WIRING	STD	STD	STD
WATER SHUTOFFS THRU-OUT & MAIN	STD	STD	STD
EXTERIOR WATER FAUCET	OPTION	STD X 1	STD X 1

INTERIOR FINISHES			
DELUXE CHANDELIER DINING ROOM	OPTION	STD	STD
ENTRY LINO	OPTION	STD	STD
CARPET	LIVE WIRE II	MANTRA	NEW DAY
1/2" REBOND CARPET PAD	STD	STD	STD
2-PANEL INTERIOR DOORS - WHITE	STD	STD	STD
PEWTER DOOR KNOBS	STD	STD	LEVER LOCKSETS
MINI BLINDS & VALANCES THRU-OUT	STD	PLUS DRAPES IN LIVING ROOM AND FAMILY ROOM	OPTION
1 3/4" FLAT MOLDING DOOR & COVE	STD	N/A	N/A
2 3/4" RESIDENTIAL MOLDING BASE & COVE	OPTION	STD	N/A
3 5/8" COVE MOLDING	N/A	OPTION	HIGH PROFILE WHITE
3 1/2" BASE MOLDING	N/A	OPTION	HIGH PROFILE WHITE
WIRE VENTED SHELVES ALL CLOSETS	STD	STD	STD
WOOD WINDOW SILLS	OPTION	OPTION	STD
WASHER DRYER SHELF	OPTION	STD	STD
WOOD CLOSET SHELVES - MBR	OPTION	STD	STD

Specifications & Standards

Feature	Pinnacle	Brentwood	Adirondack - Modular
KITCHEN			
3" WILSON ART® BACKSPLASH THRU-OUT	STD	STD	STD
36" COUNTER HEIGHT	STD	STD	STD
30" OVERHEAD CABINETS	STD	STD	STD
MDF CABINET DOORS	STD	STD	N/A
HARDWOOD CABINET DOORS	OPTION	OPTION	STD
MDF CABINET STILES	STD	STD	N/A
SOLID HARDWOOD STILES	OPTION	OPTION	STD
HIDDEN CABINET HINGES	STD	STD	STD
PEWTER CABINET PULLS	STD	STD	STD
LINED OVERHEAD CABINETS	STD	STD	STD
ADJUSTABLE SHELVING IN OVERHEADS	STD	STD	STD
BOTTOM PANEL UNDERNEATH CABINET	STD	STD	STD
DRAWER OVER DOOR CONSTRUCTION	STD	STD	STD
SIDE MOUNT ROLLER GUIDES	STD	STD	STD
STAINLESS STEEL DEEP SINK	OPTION	STD	STD
SINGLE LEVER FAUCET - KITCHEN	OPTION	STD	STD
30" RANGE	STD GAS	SELF-CLEAN GAS OR ELECTRIC	OPTION
FROST FREE REFRIGERATOR	18 CU. FT.	22 CU. FT. SIDE BY SIDE	OPTION
WHITE APPLIANCE PACKAGE	OPTION	STD	OPTION
BOTTOM CABINET MOLDING	OPTION	STD	STD
TIP OUT TRAYS AT KITCHEN SINK	STD	STD	STD
CENTER SHELVES BASE CABINETS	STD	STD	STD
HD LAMINATE	OPTION	STD	STD
CRESCENT EDGE	OPTION	STD	STD - KITCHEN
SELF CLOSING DRAWERS	OPTION	OPTION	STD - KITCHEN
SELF CLOSING DRAWER CABINET DOOR HINGES	OPTION	OPTION	STD

BATHROOM			
FULL SIZE 60" 1 PC FIBERGLASS TUB	STD (PER PRINT)	STD (PER PRINT)	STD (PER PRINT)
36" SHOWER 1 PC SHOWER PER PLAN	STD (PER PRINT)	STD (PER PRINT)	STD (PER PRINT)
SHOWER DOOR PER PRINT	OPTION	STD	STD
LIGHTED VENT FANS ALL BATHS	STD	STD	STD
36" BATH VANITY HEIGHT	STD	STD	STD
PORCELAIN COMMODOES W/SHUTOFFS	STD	STD	STD
CHINA SINKS ALL BATHS	OPTION	STD	STD
TUB OVERDRAPE PER PRINT	OPTION	STD	STD
FIBERGLASS SOAKER TUB	STD (PER PRINT)	STD (PER PRINT)	STD (PER PRINT)
ANTI-SCALD TUB/SHOWER FAUCETS	OPTION	STD	STD
ELONGATED PORCELAIN COMMODOES	OPTION	OPTION	STD
MIRRORED COSMETIC BOXES	OPTION	OPTION	STD
MIRROR & LIGHTS ALL VANITIES	STD	STD	STD

Make yourself at home with Titan Homes



As a proud member of the Champion Family of Homebuilders, we invite you to find out for yourself how much more to life there can be.



Titan Homes
PO Box 177
951 Route 12 South
Sangerfield, NY 13455
800.937.3911
titanhomesny.com

CHAMPION®
HOME BUILDERS